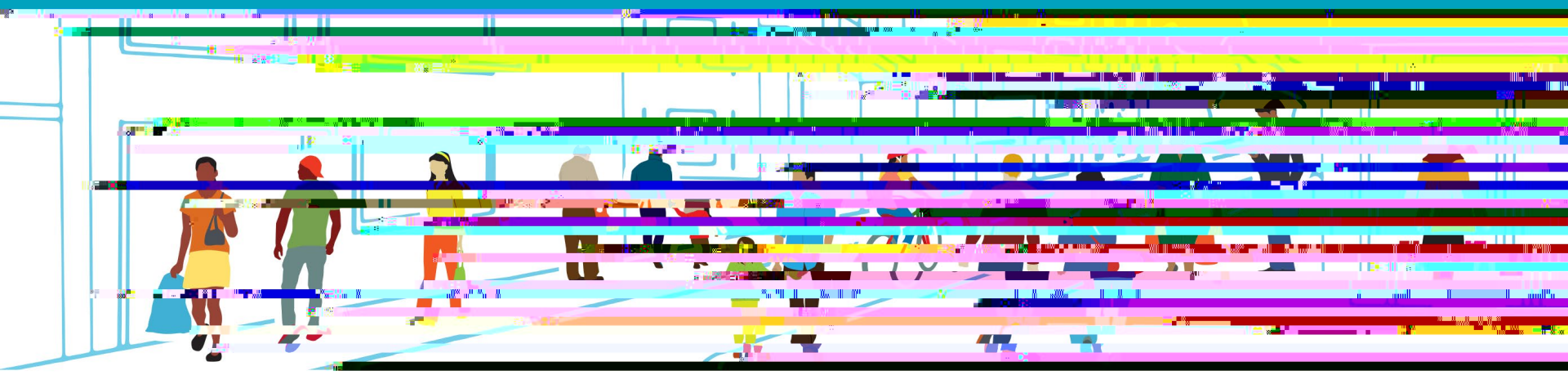
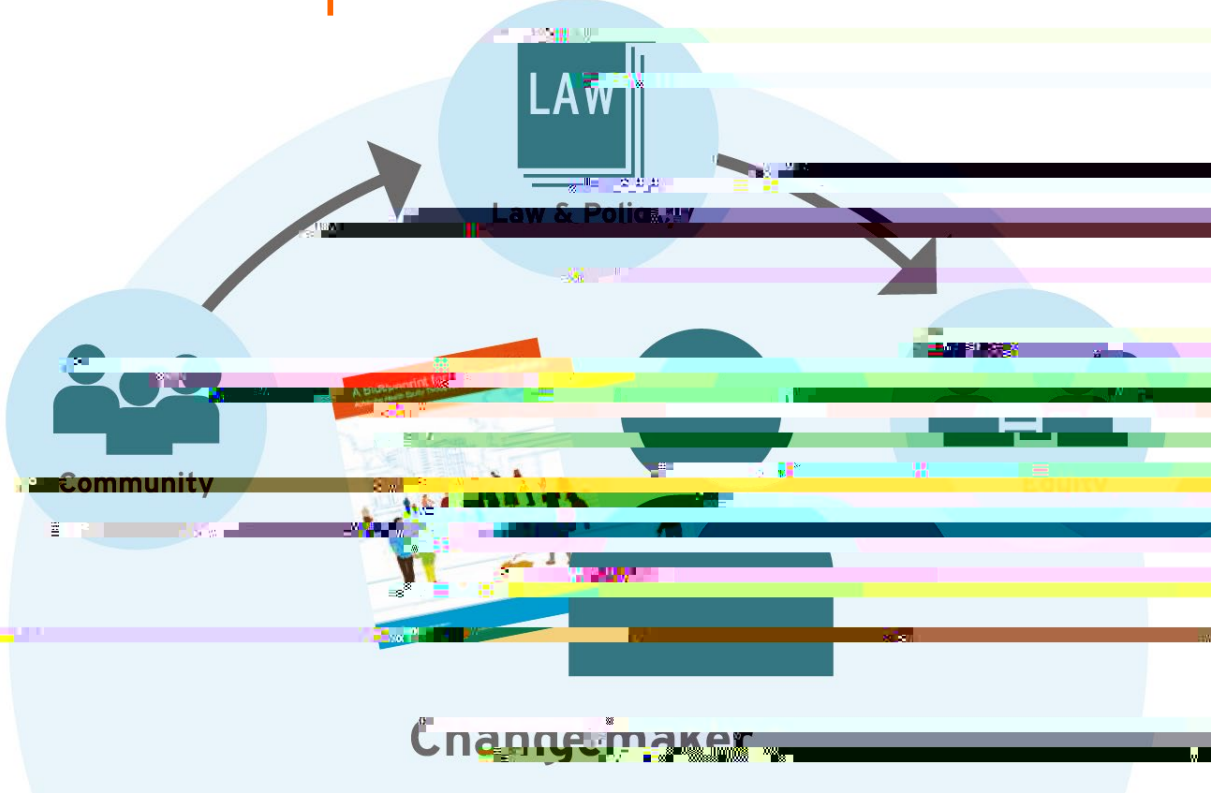


A Blueprint for Changemakers

changelabsolutions.org/blueprint



Overview of the Blueprint





What Health Inequities Are & Why They Exist

A Blueprint for Changemakers

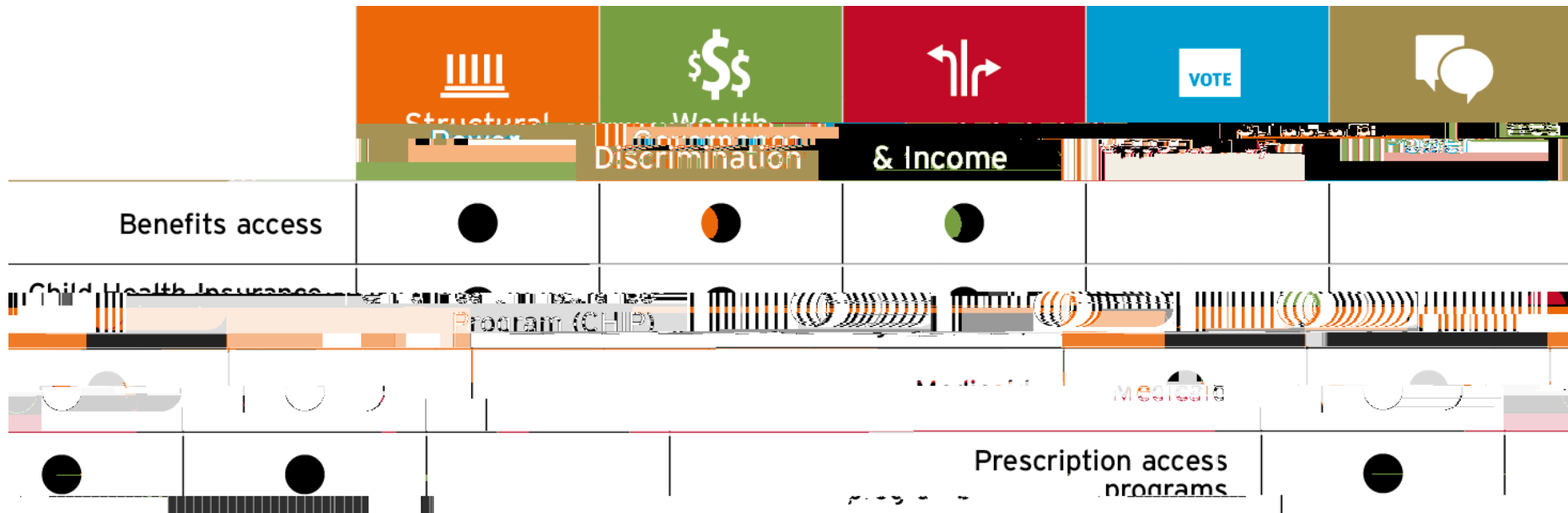
Why Law & Policy Tools Are Needed to Achieve Health Equity

A Blueprint for Changemakers

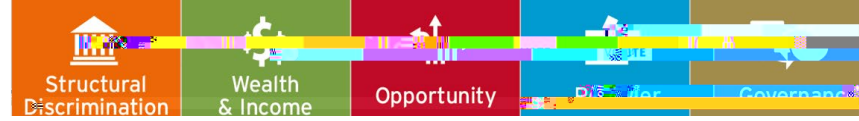
Addressing Health Inequity at the Local Level: Opportunities & Barriers

A Blueprint for Changemakers

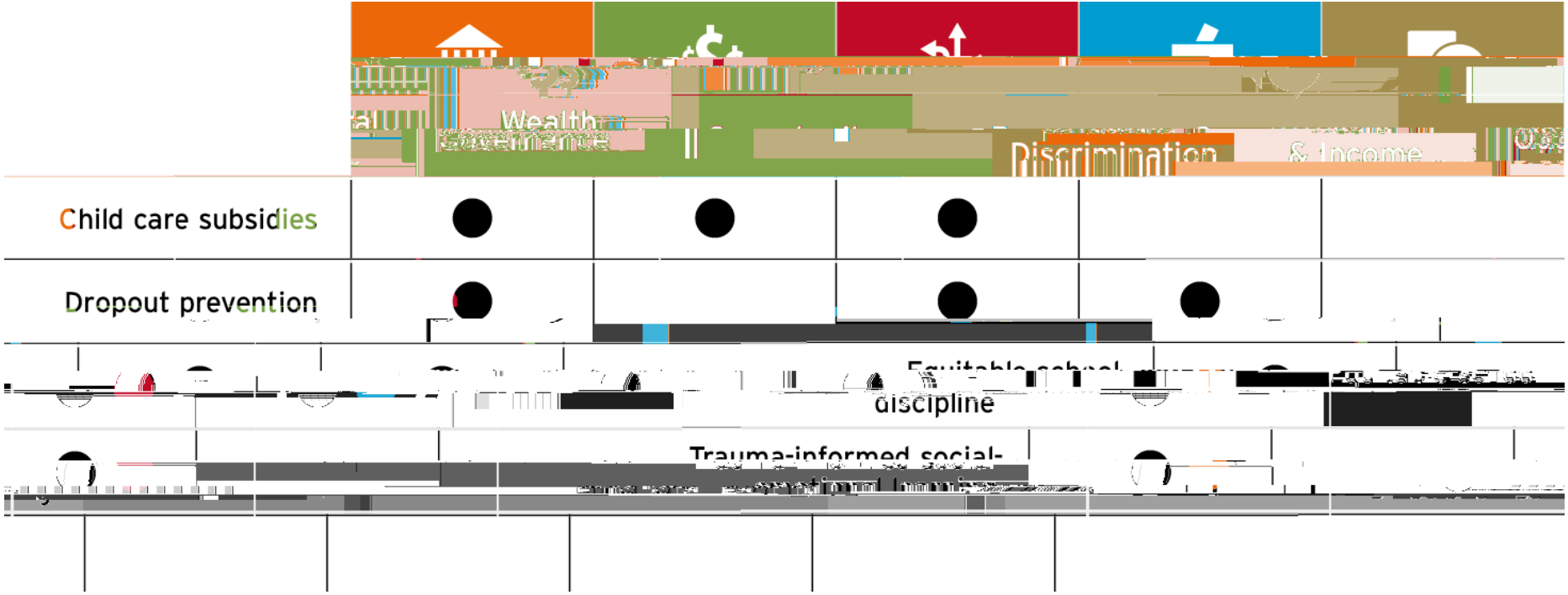
Access to Health Care



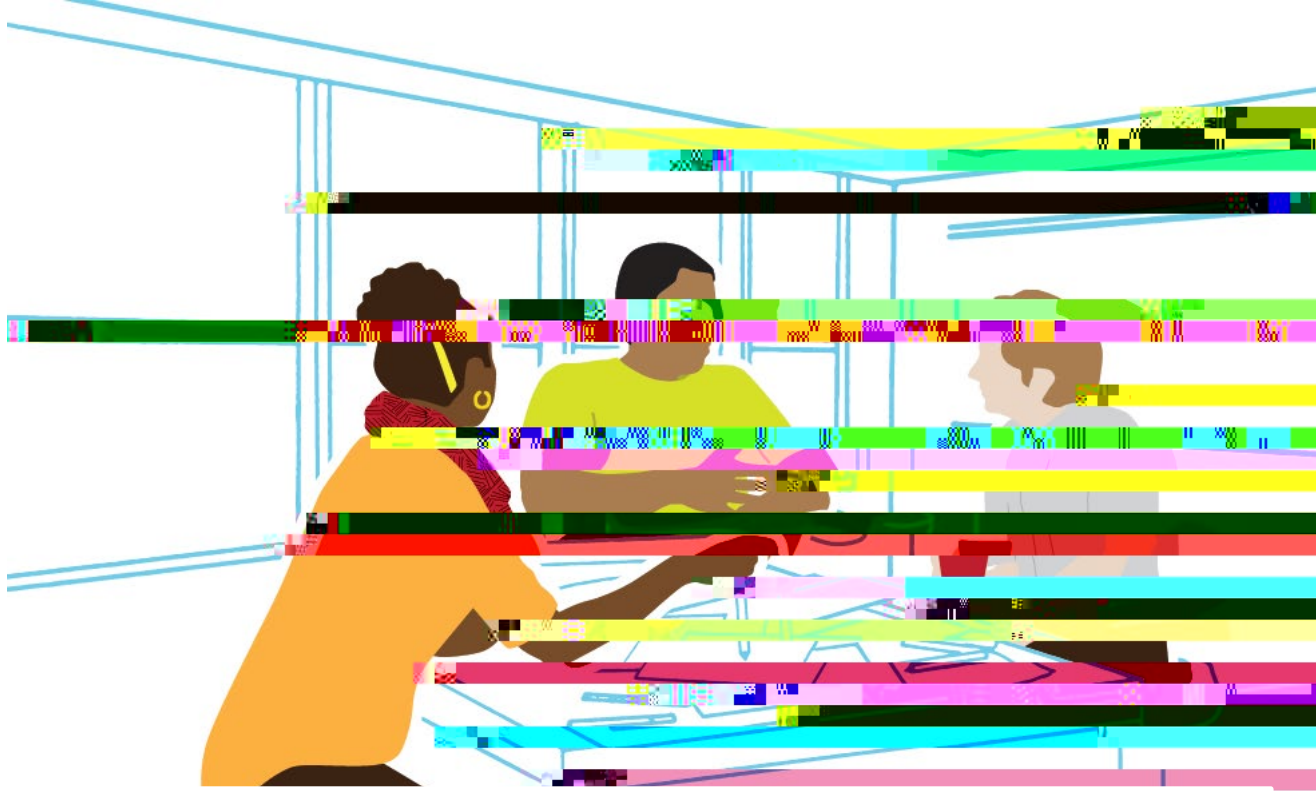
Place-Based Approaches



Early Childhood Development & Education







Achieving Health Equity Through Partnerships & Community Engagement

A Blueprint for Changemakers



What is equitable enforcement?

the process of ensuring compliance with law and policy
that considers and minimizes harms
to underserved communities

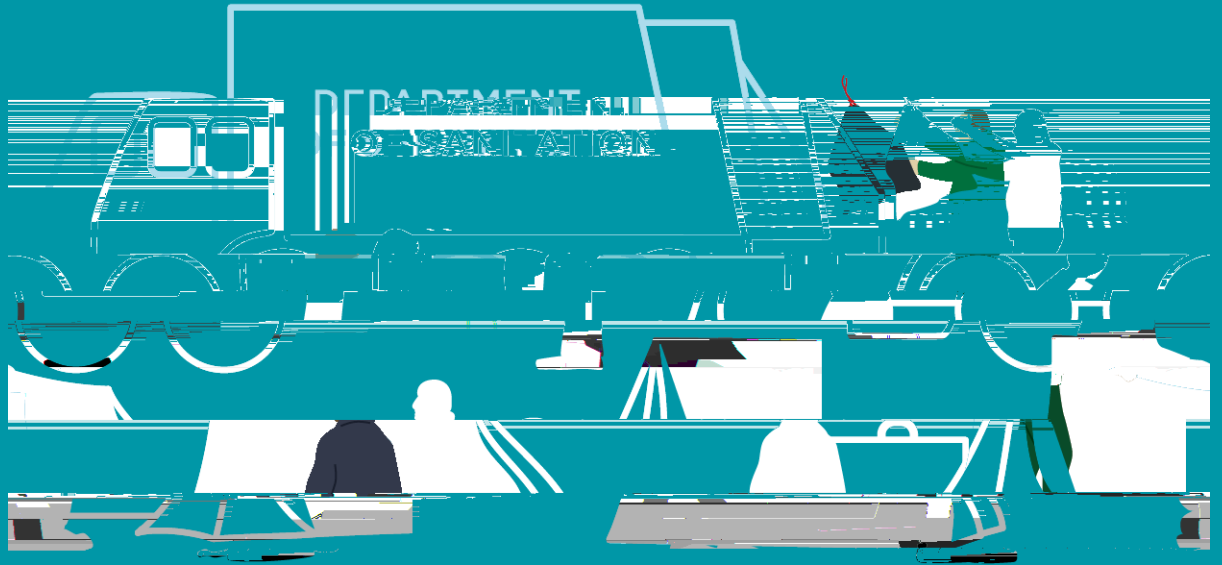
Underenforcement

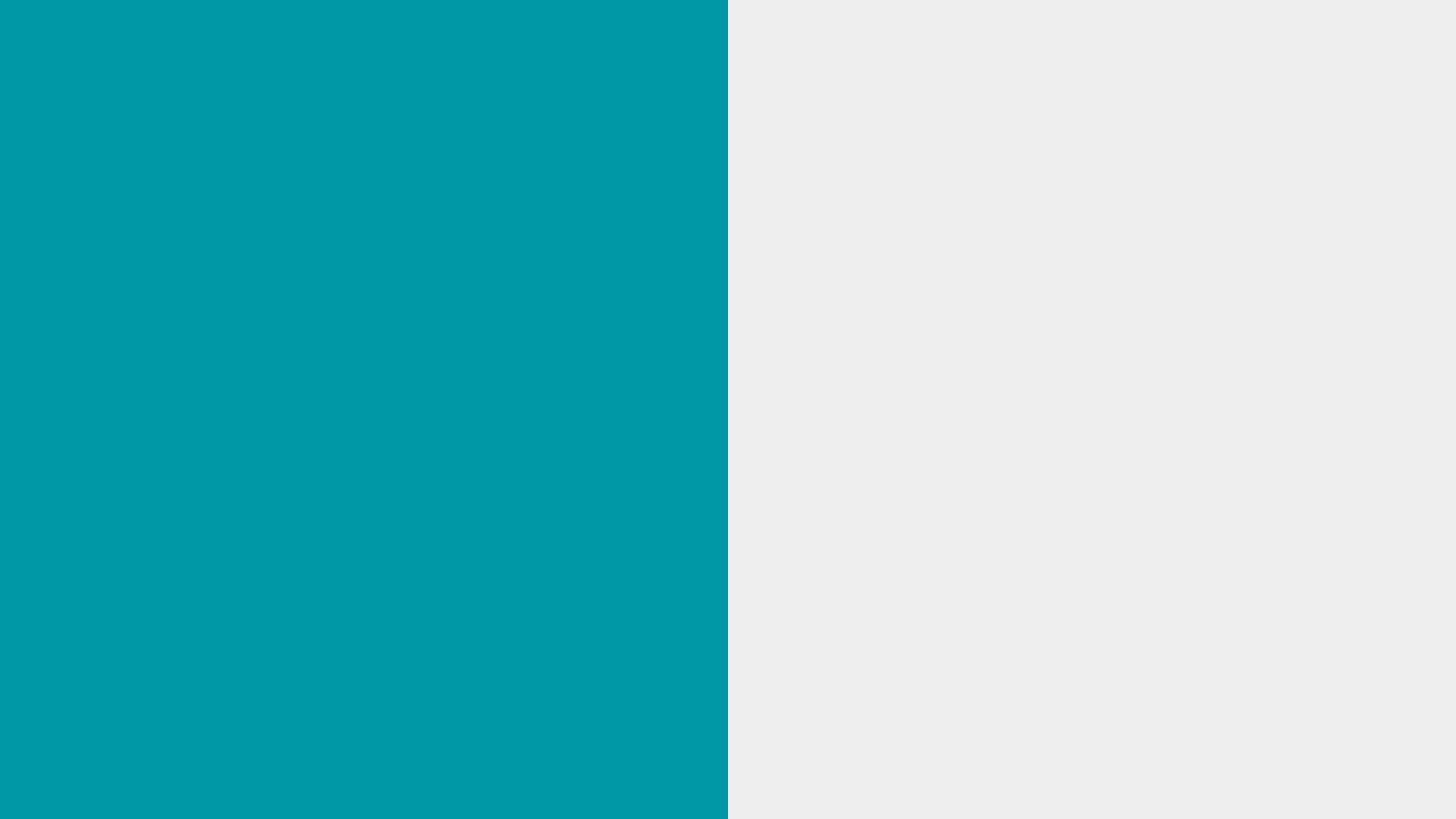


When laws that are designed to protect underserved communities from threats to their health and economic security are not consistently enforced

Overenforcement

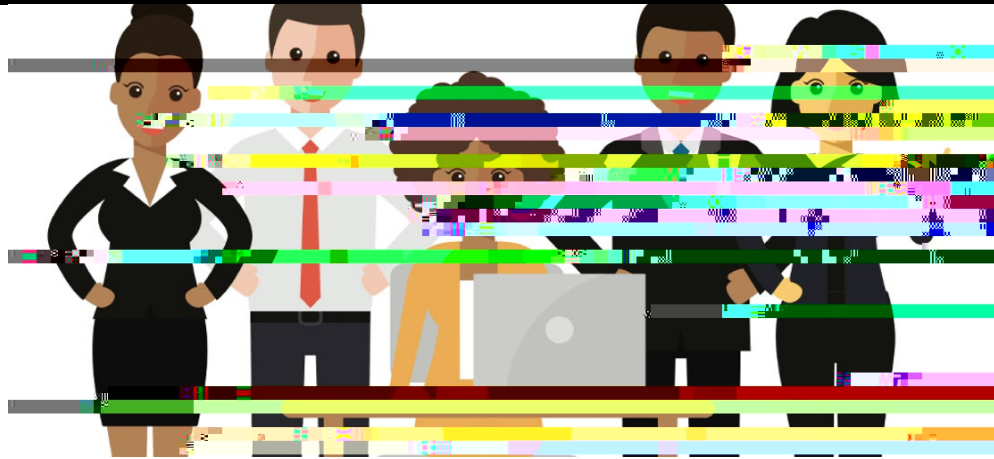
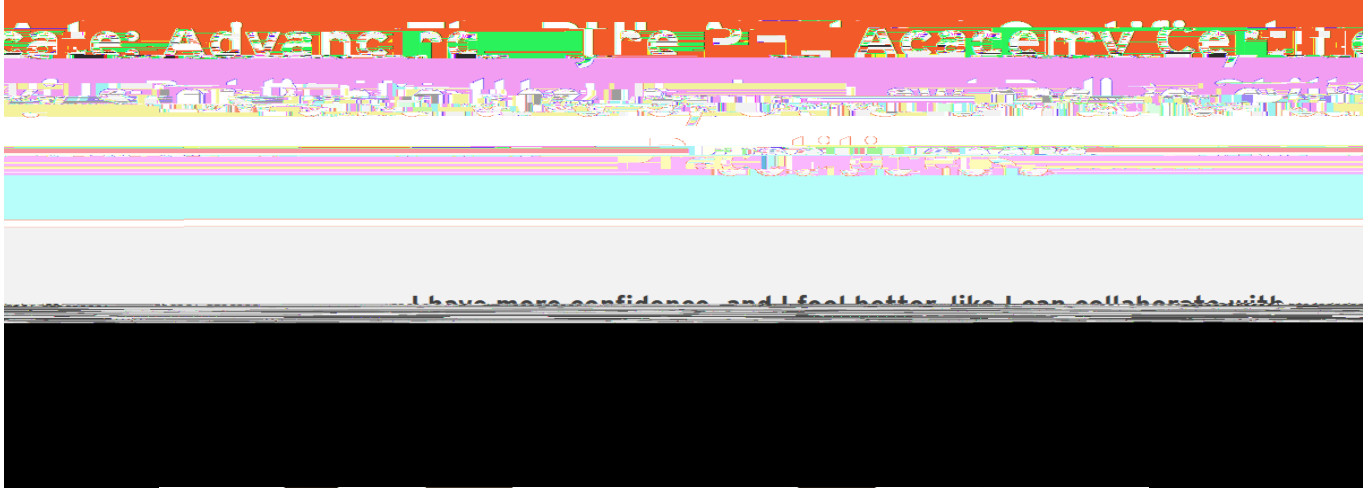
When laws designed to protect the health of the public are enforced more frequently, or more strictly, in certain places — or against certain people as compared to others





Where do we go from here?

- Training the public health workforce on the law
- Communications & messaging
- Centering community
- Creating a new framework for PH governance
- Underscoring the importance of advocacy



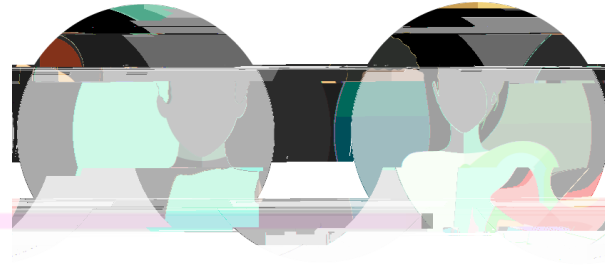
[Introducing the Public Health Law Academy Certificate | ChangeLab Solutions](#)

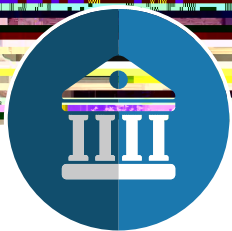
Messaging Overview

1. Let strategy dictate your message
2. Frame public health as indispensable
3. Portray public health as competent, confident, and active
4. Use plain language and describe technical or vague language or jargon
5. Describe how bills and lawsuits block public health



Centering Community

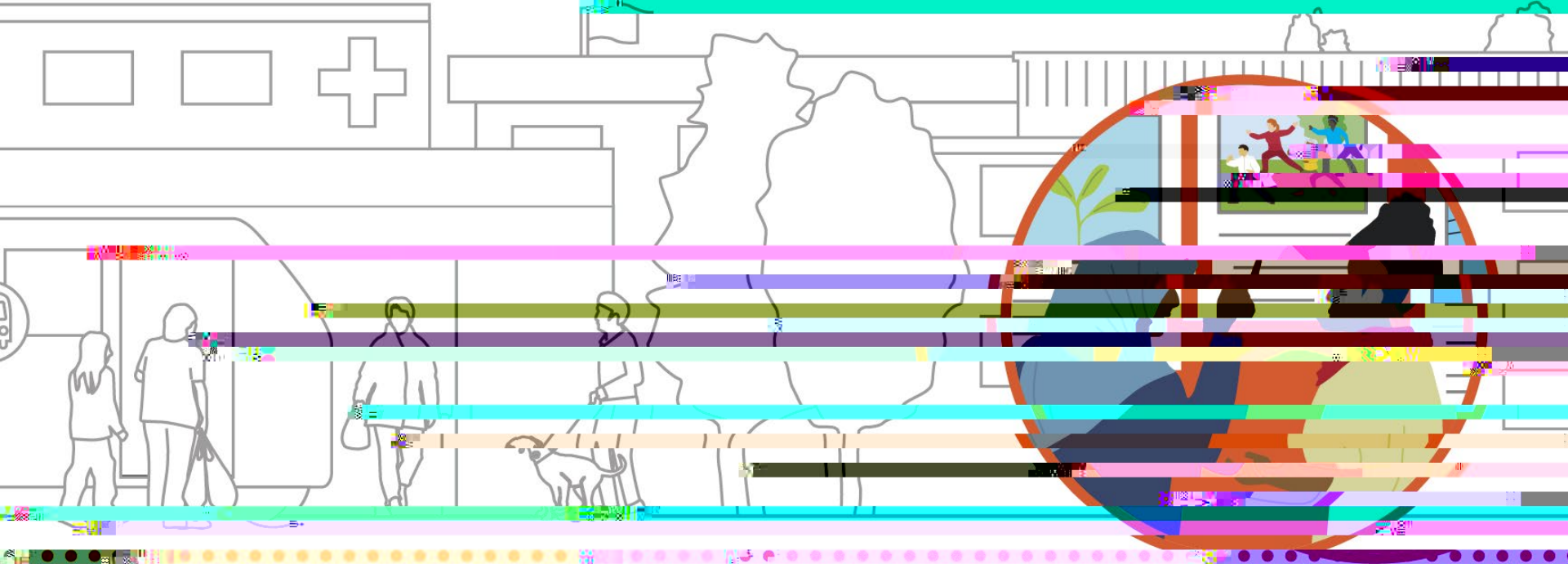




The background features a grayscale image of the Statue of Liberty, showing her head and crown in the foreground and her torso extending upwards. The image is overlaid with several horizontal bars in various colors (green, grey, orange, lime green, pink, cyan, purple, blue) and digital glitch artifacts, including small squares and lines of color, creating a modern, digital aesthetic.

Fighting for Public Health

Six Key Findings



Thank you!

Website: changelabsolutions.org

Twitter: [@changelabworks](https://twitter.com/changelabworks)

Email: sadler@changelabsolutions.org