

Inside this issue:

SLU News

[Hospital Progress](#)

Outpatient Offices

[555 N. New Ballou, Bldg](#)

Facial Plastic

[Welcoming Dr. Sims & Staff](#)

International Elective

[Dr. Samkon Gado](#)

Harkins Graduation

[Awards Ceremony](#)

Faculty News

[Resignation and Appointment](#)

News

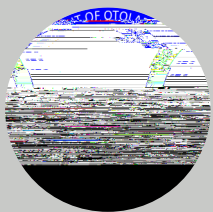
[Ben D. S. S. S.](#)

[Incoming Residents](#)

For Job Postings



Give Now

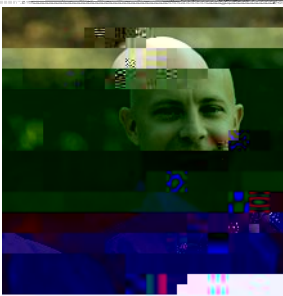


[Saint Louis University Department of Otolaryngology, Head and Neck Surgery](#)

[The University of Missouri - St. Louis](#)
[University Hospital scheduled to open 2020](#)



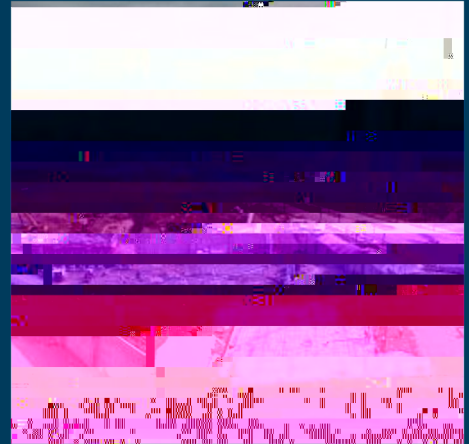
... information. Admin. ...
... Now ...
... building ...
... office with a growing Facial Plastic Division ...



Justin Antidel, MD.
Chairman

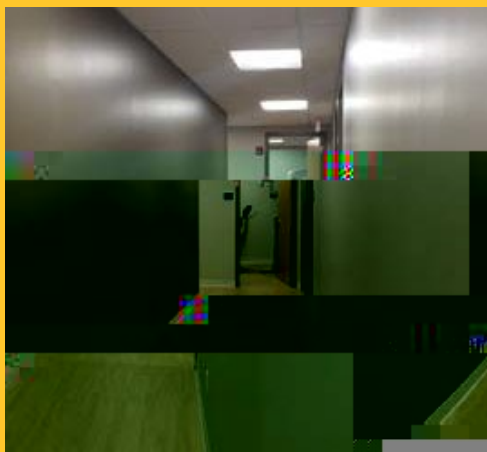
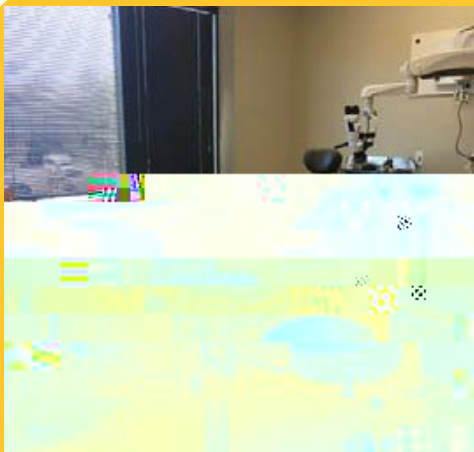
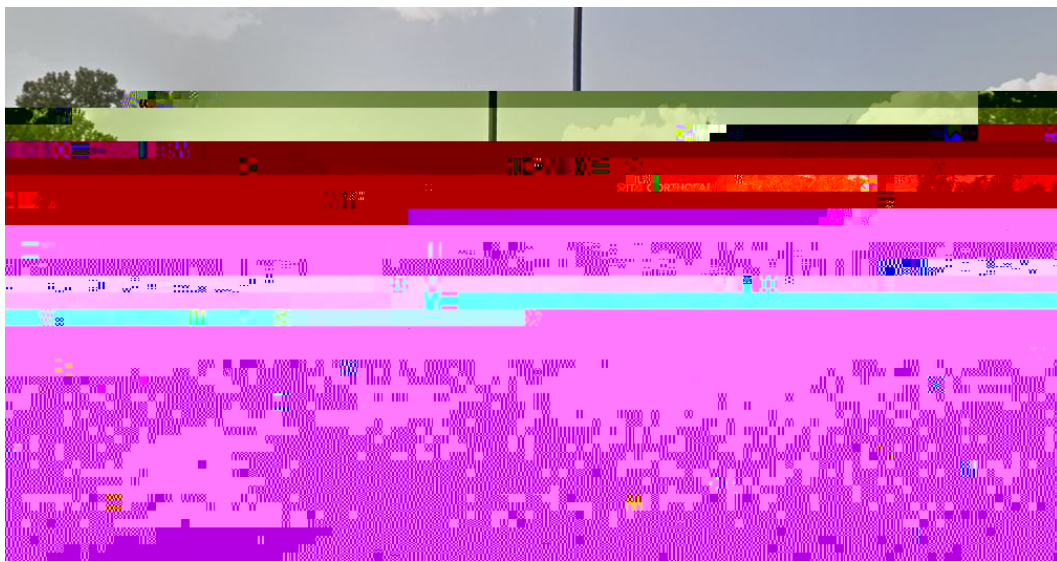
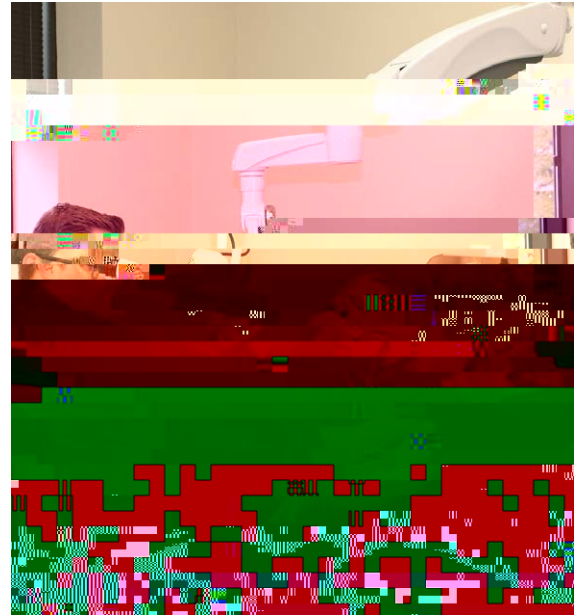
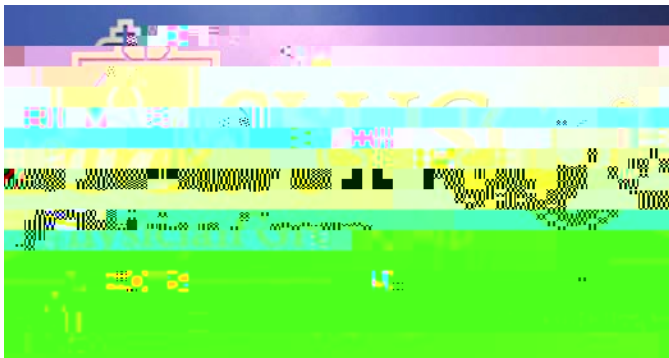
... Registration is open at
...
...
... of the future of the Department
We look forward to seeing you there!

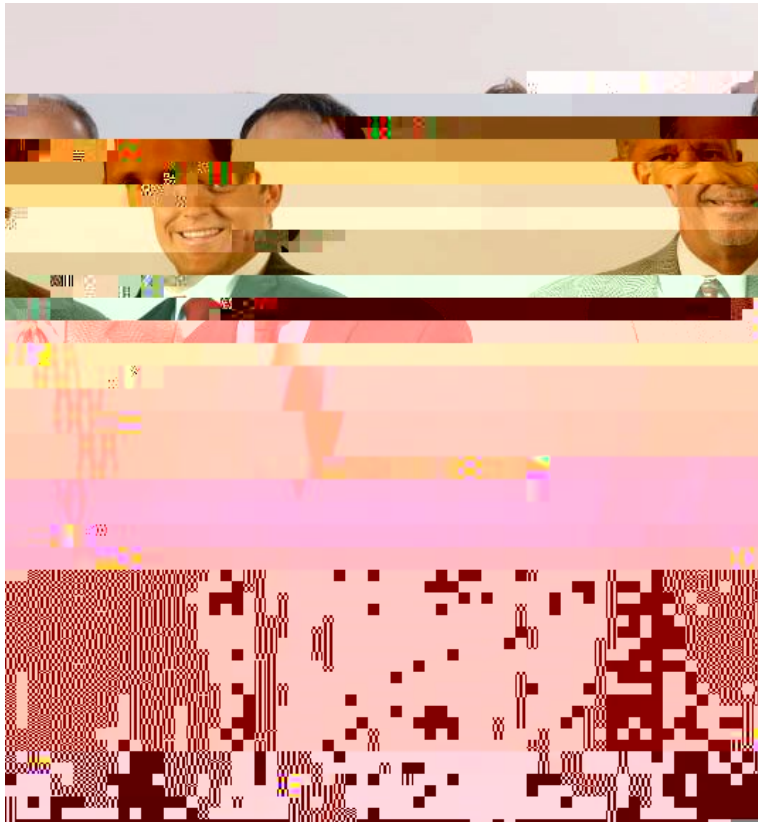
JA



5150 N. 98th Street, Suite 200, West Creek, WI 53191
555 N. New Berlin Road, Suite 200, West Creek, WI 53191
Plastics practice

Great office with the best location in the area. The staff is friendly and professional. The office is clean and well-maintained. The office is a great place to work.





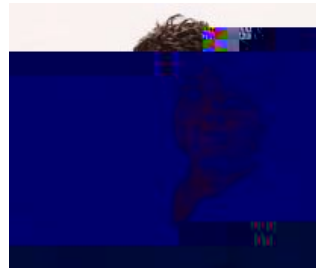
the



Special Practice Team

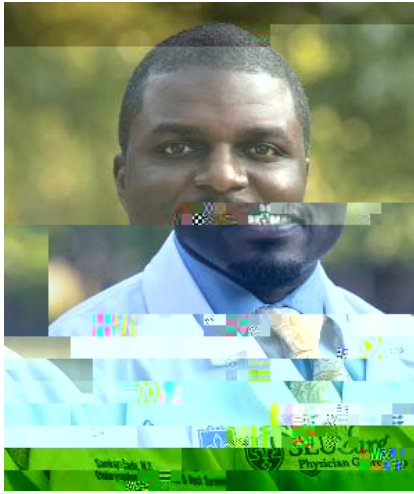


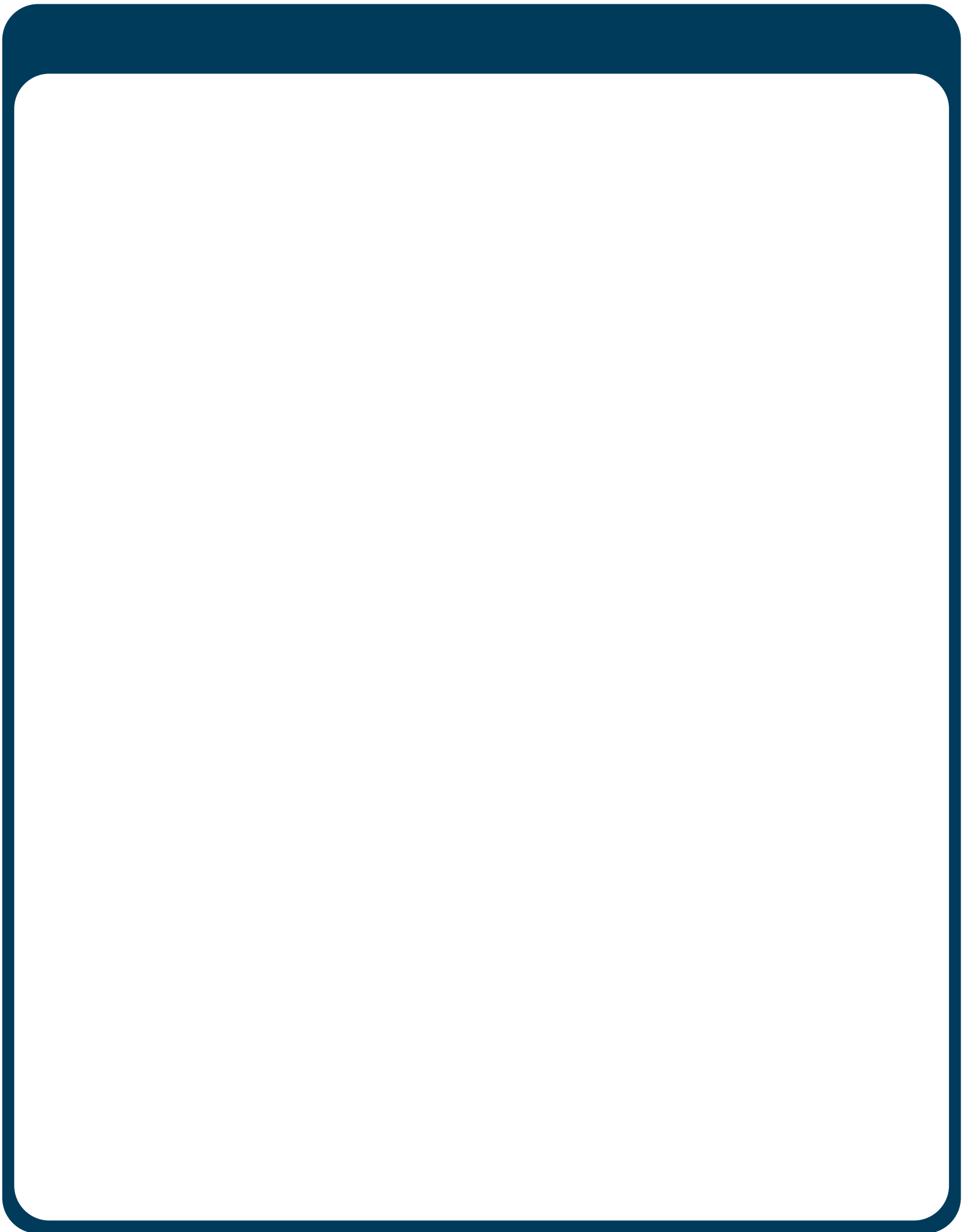
Sharon M. Hines, MD, PhD
Assistant Professor of Pediatrics

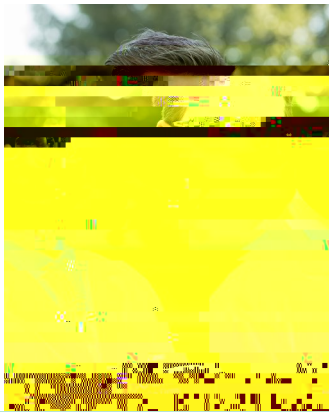


Scott A. Hines, MD, PhD
Nurse





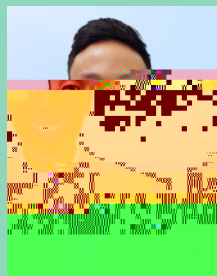




NEW RESIDENTS

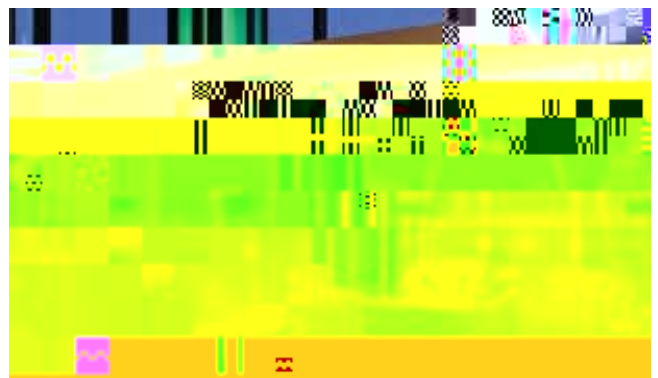
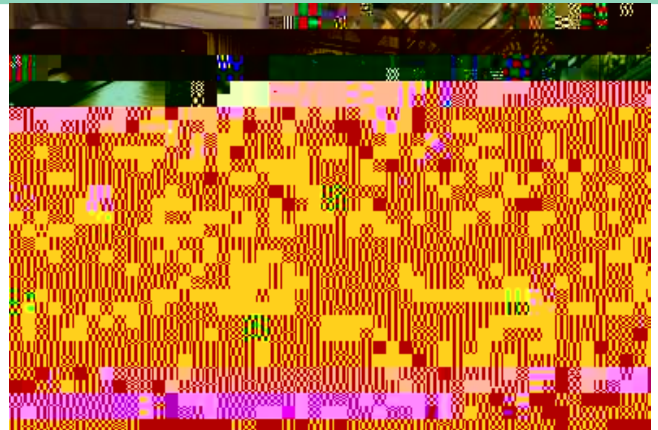
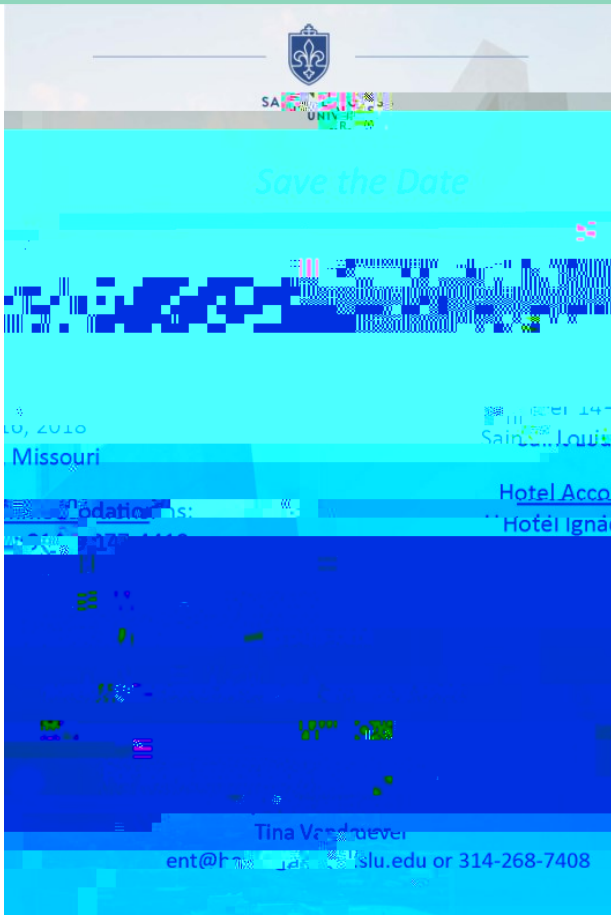
Scott Hong, MD

**Park University Medical
Center**



Joseph Sinnwell, MD

**Wake Forest School of
Medicine of Wake Forest
Baptist Medical Center**



- Assessing university students' sexual risk behaviors as predictors of human papillomavirus (HPV) vaccine uptake behavior. Rohde RL, Adjei Boakye E, Christopher KM, Geneus CJ, , Varvares MA, Vaccine. 2018 Jun 14;36(25):3629-3634
- Correlates of health information seeking between adults diagnosed with and without cancer. Adjei Boakye E, Mohammed KA, Geneus CJ, Tobo BB,

